

Courtesy Of Jeremy J Amyotte Of Real Broker

# \$349,900 - 2203 9720 106 Street, Edmonton

MLS® #E4406736

**\$349,900**

1 Bedroom, 1.00 Bathroom, 873 sqft  
Condo / Townhouse on 0.00 Acres

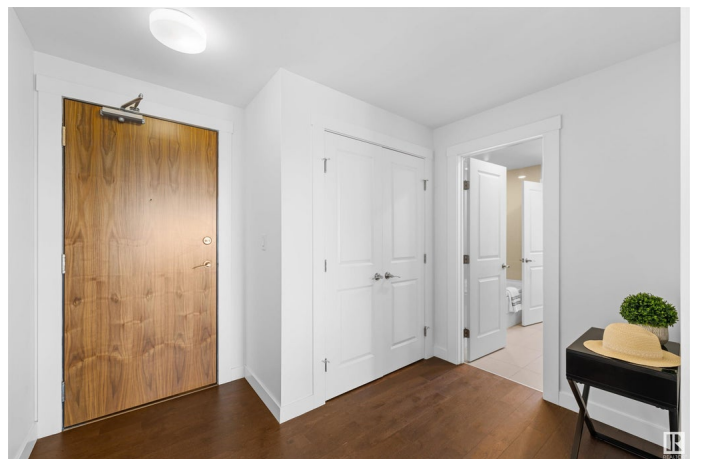
Downtown (Edmonton), Edmonton, AB

The Handel model in the Symphony is a nearly 900 sq ft with an open concept and an abundance of windows. It offers a large living space with wonderful north and west view. Well appointed throughout with upgraded appliances including a gas stove, plus large balcony with views of the beautiful legislative grounds, as well as a walk-in closet with built in shelving. Comes with one underground parking stall. Building amenities include a private lounge, Fitness Centre, and pedway with direct access to the government district and Legislature Building.

Built in 2018

## Essential Information

MLS® #	E4406736
Price	\$349,900
Bedrooms	1
Bathrooms	1.00
Full Baths	1
Square Footage	873
Acres	0.00
Year Built	2018
Type	Condo / Townhouse
Sub-Type	Apartment High Rise
Style	Single Level Apartment
Status	Active



## Community Information

Address	2203 9720 106 Street
Area	Edmonton
Subdivision	Downtown (Edmonton)
City	Edmonton
County	ALBERTA
Province	AB
Postal Code	T5K 0K8

## Amenities

Amenities	Air Conditioner, Car Wash, Exercise Room, No Smoking Home, Parking-Visitor, Social Rooms
Parking	Heated, Underground

## Interior

Appliances	Dishwasher-Built-In, Dryer, Microwave Hood Fan, Refrigerator, Washer
Heating	Heat Pump, Natural Gas
# of Stories	27
Stories	1
Has Basement	Yes
Basement	None, No Basement

## Exterior

Exterior	Concrete, Brick, Stucco
Exterior Features	Golf Nearby, Hillside, Landscaped, Public Transportation, Schools, Shopping Nearby, Ski Hill Nearby, See Remarks
Roof	EPDM Membrane
Construction	Concrete, Brick, Stucco
Foundation	Concrete Perimeter

## School Information

Elementary	Holy Child Catholic
Middle	McKernan School
High	Strathcona High School

## Additional Information

Date Listed	September 17th, 2024
Days on Market	199
Zoning	Zone 12
RE / Bank Owned	Yes

Condo Fee            \$498

DATA IS DEEMED RELIABLE BUT IS NOT GUARANTEED ACCURATE BY THE REALTORS® ASSOCIATION OF EDMONTON. COPYRIGHT 2025 BY THE REALTORS® ASSOCIATION OF EDMONTON. ALL RIGHTS RESERVED. Trademarks are owned or controlled by the Canadian Real Estate Association (CREA) and identify real estate professionals who are members of CREA (REALTOR®, REALTORS®) and/or the quality of services they provide (MLS®, Multiple Listing Service®)

Listing information last updated on April 4th, 2025 at 10:17am MDT