

Courtesy Of Heather McLellan Of Exp Realty

\$838,000 - 279 Silverstone Crescent, Stony Plain

MLS® #E4419718

\$838,000

2 Bedroom, 2.50 Bathroom, 2,792 sqft

Single Family on 0.00 Acres

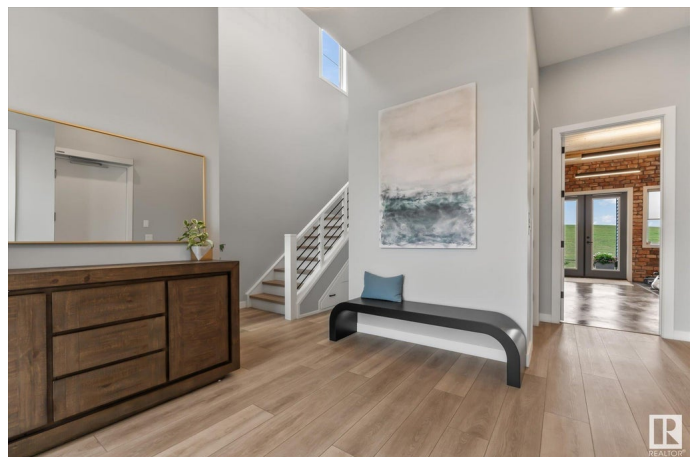
Silverstone, Stony Plain, AB

Backing on to green space & walking trails, this luxury loft-style home is sure to impress! You will be captivated by the superior build w/high ceilings & unique craftsman details. Main level open flex space provides countless options: office, hobby area, further living space or fantastic gym per current set-up w/commercial grade equipment incl. to buyer! Area is complete w/wet-bar, patio access & 2-pc bath. Upper level absolutely wows w/floor to ceiling custom cabinetry in the gorgeous kitchen & the seamless blend to dining, living & deck area. Completing this level is a primary suite w/spa-like ensuite & walk-in closet, another spacious bdrm, full bath, open den space & laundry rm. Outstanding build details incl. slab-on-grade construction, main level in-floor heating (incl. garage), soundproofing, commercial lighting & smart features for ease of living incl. a modern elevator ensuring access for all. Exclusive builder home warranty included. Viewing this incredible home will have you falling in love!

Built in 2022

Essential Information

| | |
|----------|-----------|
| MLS® # | E4419718 |
| Price | \$838,000 |
| Bedrooms | 2 |



| | |
|----------------|------------------------|
| Bathrooms | 2.50 |
| Full Baths | 2 |
| Half Baths | 1 |
| Square Footage | 2,792 |
| Acres | 0.00 |
| Year Built | 2022 |
| Type | Single Family |
| Sub-Type | Detached Single Family |
| Style | 2 Storey |
| Status | Active |

Community Information

| | |
|-------------|--------------------------|
| Address | 279 Silverstone Crescent |
| Area | Stony Plain |
| Subdivision | Silverstone |
| City | Stony Plain |
| County | ALBERTA |
| Province | AB |
| Postal Code | T7Z 0E8 |

Amenities

| | |
|-----------|---------------------------------------------------------------------------------------|
| Amenities | Air Conditioner, Ceiling 10 ft., Deck, No Smoking Home, Wet Bar, Workshop, HRV System |
| Parking | Double Garage Attached, Heated |

Interior

| | |
|-------------------|---------------------------------------------------------------------------------------------------------------------------------------------------------------------------------------------------------------------------------------|
| Interior Features | ensuite bathroom |
| Appliances | Air Conditioning-Central, Dishwasher-Built-In, Dryer, Freezer, Garage Control, Garage Opener, Garburator, Hood Fan, Oven-Built-In, Oven-Microwave, Refrigerator, Stove-Countertop Gas, Washer, Window Coverings, Wine/Beverage Cooler |
| Heating | Forced Air-1, In Floor Heat System, Natural Gas |
| Fireplace | Yes |
| Fireplaces | Insert, Remote Control, Tile Surround |
| Stories | 2 |
| Has Basement | Yes |
| Basement | None, No Basement |

Exterior

| | |
|-------------------|--------------------------------------------------------------------------------------------------|
| Exterior | Wood, Stone, Vinyl |
| Exterior Features | Backs Onto Park/Trees, Golf Nearby, No Through Road, Playground Nearby, Schools, Shopping Nearby |
| Roof | Asphalt Shingles |
| Construction | Wood, Stone, Vinyl |
| Foundation | Concrete Perimeter |

Additional Information

| | |
|----------------|--------------------|
| Date Listed | January 30th, 2025 |
| Days on Market | 64 |
| Zoning | Zone 91 |

DATA IS DEEMED RELIABLE BUT IS NOT GUARANTEED ACCURATE BY THE REALTORS® ASSOCIATION OF EDMONTON. COPYRIGHT 2025 BY THE REALTORS® ASSOCIATION OF EDMONTON. ALL RIGHTS RESERVED. Trademarks are owned or controlled by the Canadian Real Estate Association (CREA) and identify real estate professionals who are members of CREA (REALTOR®, REALTORS®) and/or the quality of services they provide (MLS®, Multiple Listing Service®)

Listing information last updated on April 4th, 2025 at 4:47pm MDT