

# \$540,000 - 20 Eton Link, Spruce Grove

MLS® #E4420374

**\$540,000**

3 Bedroom, 2.50 Bathroom, 1,815 sqft

Single Family on 0.00 Acres

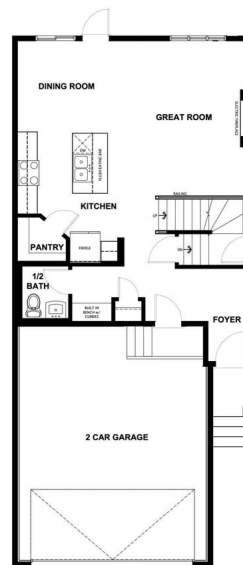
Easton, Spruce Grove, AB

This stunning 2-storey home features a double attached garage and an open-concept main floor, perfect for entertaining. The spacious living room boasts an electric fireplace, while the kitchen offers a corner pantry, an island with a breakfast bar, and plenty of storage. A convenient 2pc bath completes the main level. Upstairs, you'll find a large bonus room, laundry area, 4pc bath, and two bedrooms. The primary suite is a retreat with a walk-in closet and a luxurious 5pc ensuite, including dual sinks, a stand-up shower, and a soaker tub. A separate side entrance leads to the unfinished basement, offering endless potential. This home blends functionality and style for modern living.

Built in 2025

## Essential Information

MLS® #	E4420374
Price	\$540,000
Bedrooms	3
Bathrooms	2.50
Full Baths	2
Half Baths	1
Square Footage	1,815
Acres	0.00
Year Built	2025



MAIN FLOOR PLAN



SECOND FLOOR PLAN

Type	Single Family
Sub-Type	Detached Single Family
Style	2 Storey
Status	Active

### **Community Information**

Address	20 Eton Link
Area	Spruce Grove
Subdivision	Easton
City	Spruce Grove
County	ALBERTA
Province	AB
Postal Code	T7X 4B7

### **Amenities**

Amenities	Ceiling 9 ft., Detectors Smoke, No Animal Home, No Smoking Home, Vinyl Windows
Parking	Double Garage Attached

### **Interior**

Interior Features	ensuite bathroom
Appliances	Dishwasher-Built-In, Microwave Hood Fan, Refrigerator, Stove-Electric
Heating	Forced Air-1, Natural Gas
Fireplace	Yes
Fireplaces	Insert
Stories	2
Has Basement	Yes
Basement	Full, Unfinished

### **Exterior**

Exterior	Wood, Stone, Vinyl
Exterior Features	Park/Reserve, Playground Nearby, Schools, Shopping Nearby
Roof	Asphalt Shingles
Construction	Wood, Stone, Vinyl
Foundation	Concrete Perimeter

### **Additional Information**

Date Listed	February 4th, 2025
Days on Market	61

Zoning

Zone 91



DATA IS DEEMED RELIABLE BUT IS NOT GUARANTEED ACCURATE BY THE REALTORS® ASSOCIATION OF EDMONTON. COPYRIGHT 2025 BY THE REALTORS® ASSOCIATION OF EDMONTON. ALL RIGHTS RESERVED. Trademarks are owned or controlled by the Canadian Real Estate Association (CREA) and identify real estate professionals who are members of CREA (REALTOR®, REALTORS®) and/or the quality of services they provide (MLS®, Multiple Listing Service®)

Listing information last updated on April 6th, 2025 at 8:02pm MDT