

Courtesy Of Rod F Thompson Of Method Realty

\$1,899,000 - 11619 Saskatchewan Drive, Edmonton

MLS® #E4420880

\$1,899,000

3 Bedroom, 3.50 Bathroom, 3,032 sqft
Single Family on 0.00 Acres

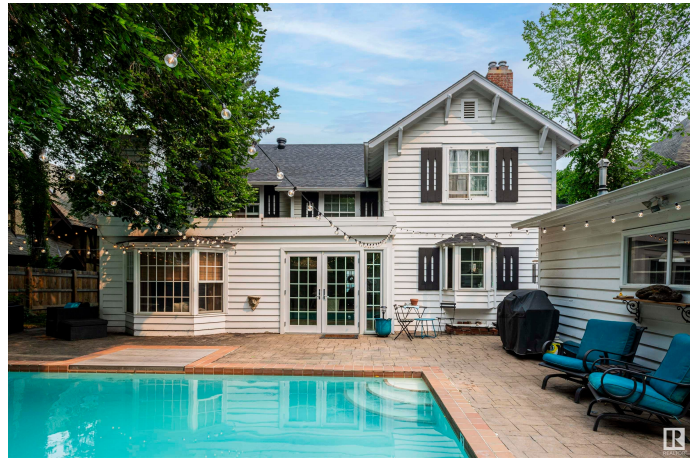
Windsor Park (Edmonton), Edmonton, AB

RARE WINDSOR PARK HOME with CITY VIEWS ~ 76' X 150' LOT~ INCREDIBLE REDEVELOPMENT OPPORTUNITY - Unbeatable location with breathtaking River Valley & City Skyline views! This stunning character home in Windsor Park sits on a rare 11,000+ sq. ft. lot, just steps from the University of Alberta and minutes from downtown, golf courses, hospitals, and Whyte Ave. Boasting 4,000+ sq. ft. of living space, this home blends classic charm with modern upgrades. Features include 4 beds, 3.5 baths, 3 living rooms, formal dining, a gourmet kitchen with granite counters & gas stove, plus 3 fireplaces. The expansive south-facing backyard offers a large swimming pool, patio, mature trees, and a double garage. The primary suite includes a spa-like ensuite with heated marble floors. Recent updates: new roof, insulation, furnaces, pool equipment & fresh paint. A rare opportunity to own a prestigious estate home in one of Edmonton's best locations.

Built in 1927

Essential Information

MLS® #	E4420880
Price	\$1,899,000
Bedrooms	3



Bathrooms	3.50
Full Baths	3
Half Baths	1
Square Footage	3,032
Acres	0.00
Year Built	1927
Type	Single Family
Sub-Type	Detached Single Family
Style	2 Storey
Status	Active

Community Information

Address	11619 Saskatchewan Drive
Area	Edmonton
Subdivision	Windsor Park (Edmonton)
City	Edmonton
County	ALBERTA
Province	AB
Postal Code	T6G 2B5

Amenities

Amenities	Patio, Pool-Outdoor, Smart/Program. Thermostat
Parking	Double Garage Detached, Rear Drive Access
Has Pool	Yes

Interior

Interior Features	ensuite bathroom
Appliances	Compactor, Dishwasher-Built-In, Dryer, Microwave Hood Fan, Refrigerator, Stove-Gas, Washer, Window Coverings
Heating	Forced Air-1, Forced Air-2, Natural Gas
Fireplace	Yes
Fireplaces	Brick Facing, Mantel
Stories	3
Has Basement	Yes
Basement	Full, Finished

Exterior

Exterior	Wood
Exterior Features	Back Lane, Fenced, Golf Nearby, Landscaped, Park/Reserve, Public

Transportation, River Valley View, Schools, Shopping Nearby, View City

Roof Asphalt Shingles
Construction Wood
Foundation Concrete Perimeter

Additional Information

Date Listed February 8th, 2025
Days on Market 62
Zoning Zone 15

DATA IS DEEMED RELIABLE BUT IS NOT GUARANTEED ACCURATE BY THE REALTORS® ASSOCIATION OF EDMONTON. COPYRIGHT 2025 BY THE REALTORS® ASSOCIATION OF EDMONTON. ALL RIGHTS RESERVED. Trademarks are owned or controlled by the Canadian Real Estate Association (CREA) and identify real estate professionals who are members of CREA (REALTOR®, REALTORS®) and/or the quality of services they provide (MLS®, Multiple Listing Service®)

Listing information last updated on April 11th, 2025 at 11:47am MDT