

# \$104,997 - 405 1620 48 Street, Edmonton

MLS® #E4422537

**\$104,997**

1 Bedroom, 1.00 Bathroom, 622 sqft  
Condo / Townhouse on 0.00 Acres

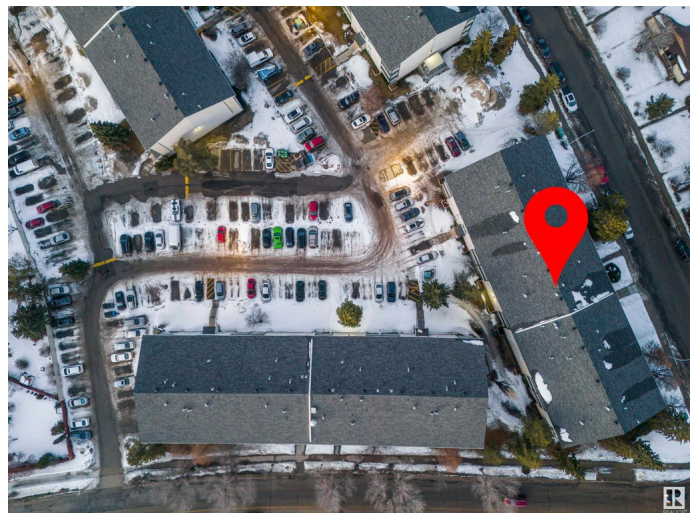
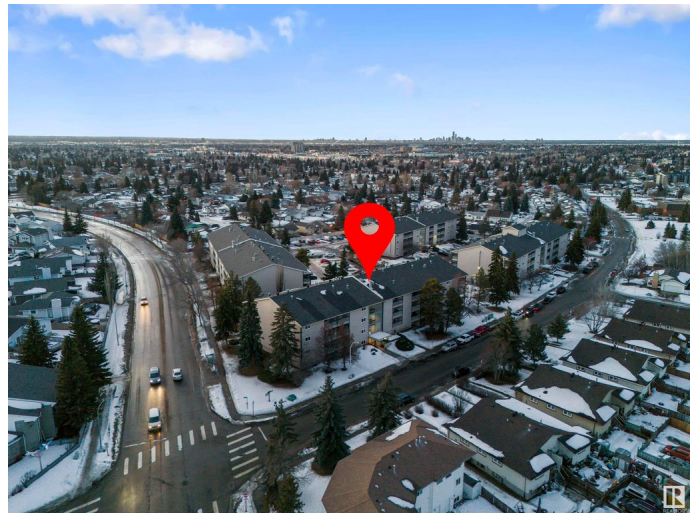
Pollard Meadows, Edmonton, AB

Welcome to Millwoods Terrace! This bright and spacious top Floor unit in Pollard Meadows is perfect for first-time buyers or investors. Featuring a functional layout with ample natural light, a well-appointed kitchen, and a cozy living area leading to a private balcony and with Laundry next door, this home offers both comfort and convenience. Located steps away from schools, parks, shopping, and public transit, you'll enjoy all the perks of urban living in a quiet, family-friendly neighborhood. Don't miss this affordable opportunity to own in a fantastic community.

Built in 1981

## Essential Information

MLS® #	E4422537
Price	\$104,997
Bedrooms	1
Bathrooms	1.00
Full Baths	1
Square Footage	622
Acres	0.00
Year Built	1981
Type	Condo / Townhouse
Sub-Type	Lowrise Apartment
Style	Single Level Apartment
Status	Active



## Community Information

Address 405 1620 48 Street  
Area Edmonton  
Subdivision Pollard Meadows  
City Edmonton  
County ALBERTA  
Province AB  
Postal Code T6L 5P1

## Amenities

Amenities Hot Water Instant, Parking-Visitor, Patio, See Remarks  
Parking Stall

## Interior

Appliances Dishwasher-Built-In, Hood Fan, Refrigerator, Stove-Electric  
Heating Forced Air-1, Natural Gas  
# of Stories 4  
Stories 1  
Has Basement Yes  
Basement None, No Basement

## Exterior

Exterior Wood, Vinyl  
Exterior Features Playground Nearby, Public Transportation, Schools  
Roof Asphalt Shingles  
Construction Wood, Vinyl  
Foundation Concrete Perimeter

## Additional Information

Date Listed February 22nd, 2025  
Days on Market 48  
Zoning Zone 29  
Condo Fee \$362

DATA IS DEEMED RELIABLE BUT IS NOT GUARANTEED ACCURATE BY THE REALTORS® ASSOCIATION OF EDMONTON. COPYRIGHT 2025 BY THE REALTORS® ASSOCIATION OF EDMONTON. ALL RIGHTS RESERVED. Trademarks are owned or controlled by the Canadian Real Estate Association (CREA) and identify real estate professionals who are members of CREA (REALTOR®, REALTORS®) and/or the quality of services they provide (MLS®, Multiple Listing Service®)

Listing information last updated on April 11th, 2025 at 3:32pm MDT