

Courtesy Of Andy T Huynh Of Exp Realty

## \$569,900 - 21311 36 Avenue, Edmonton

MLS® #E4423890

### \$569,900

3 Bedroom, 2.50 Bathroom, 1,961 sqft  
Single Family on 0.00 Acres

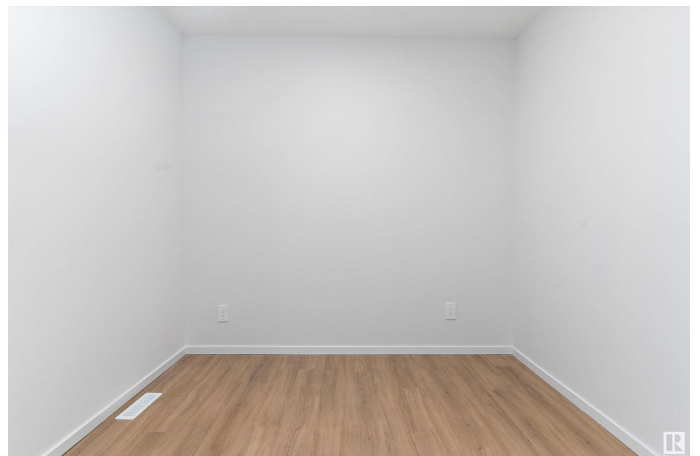
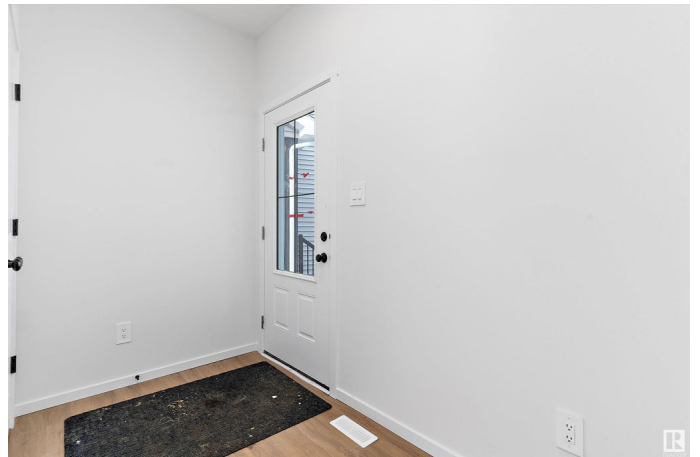
Edgemont (Edmonton), Edmonton, AB

Step into the stunning Senna-Z II built by Daytona Homes, a 1,961 sq. ft. dream home designed for modern living! This 3-bedroom, 2.5-bath beauty boasts 9' main floor ceilings, a versatile flex space, and a cozy bonus room—perfect for work or play. The open-concept kitchen shines with a walk-through pantry, extended island, and stylish nook, flowing seamlessly into the great room with soaring open-to-above ceilings for an airy, grand feel. Upstairs, the primary suite impresses with double sinks, linen storage, a walk-in closet with laundry access, plus two additional bedrooms and a central bonus room. The mudroom with built-in cubbies adds everyday convenience. Separate side entrance included for future legal suite. Only minutes away from Costco, shopping amenities, and public transit. Quick Possession!

Built in 2025

### Essential Information

MLS® #	E4423890
Price	\$569,900
Bedrooms	3
Bathrooms	2.50
Full Baths	2
Half Baths	1



Square Footage	1,961
Acres	0.00
Year Built	2025
Type	Single Family
Sub-Type	Detached Single Family
Style	2 Storey
Status	Active

### **Community Information**

Address	21311 36 Avenue
Area	Edmonton
Subdivision	Edgemont (Edmonton)
City	Edmonton
County	ALBERTA
Province	AB
Postal Code	T6M 3C1

### **Amenities**

Amenities	See Remarks
Parking	Double Garage Attached

### **Interior**

Interior Features	ensuite bathroom
Appliances	Hood Fan, Oven-Microwave
Heating	Forced Air-1, Natural Gas
Stories	2
Has Basement	Yes
Basement	Full, Unfinished

### **Exterior**

Exterior	Wood, Vinyl
Exterior Features	Playground Nearby, Public Transportation, Schools, Shopping Nearby
Roof	Asphalt Shingles
Construction	Wood, Vinyl
Foundation	Concrete Perimeter

### **Additional Information**

Date Listed	March 4th, 2025
Days on Market	10

## Zoning

## Zone 57

DATA IS DEEMED RELIABLE BUT IS NOT GUARANTEED ACCURATE BY THE REALTORS® ASSOCIATION OF EDMONTON. COPYRIGHT 2025 BY THE REALTORS® ASSOCIATION OF EDMONTON. ALL RIGHTS RESERVED. Trademarks are owned or controlled by the Canadian Real Estate Association (CREA) and identify real estate professionals who are members of CREA (REALTOR®, REALTORS®) and/or the quality of services they provide (MLS®, Multiple Listing Service®)

Listing information last updated on March 13th, 2025 at 11:47pm MDT