

\$200,000 - 409 15499 Castle Downs Road, Edmonton

MLS® #E4425835

\$200,000

1 Bedroom, 1.00 Bathroom, 958 sqft
Condo / Townhouse on 0.00 Acres

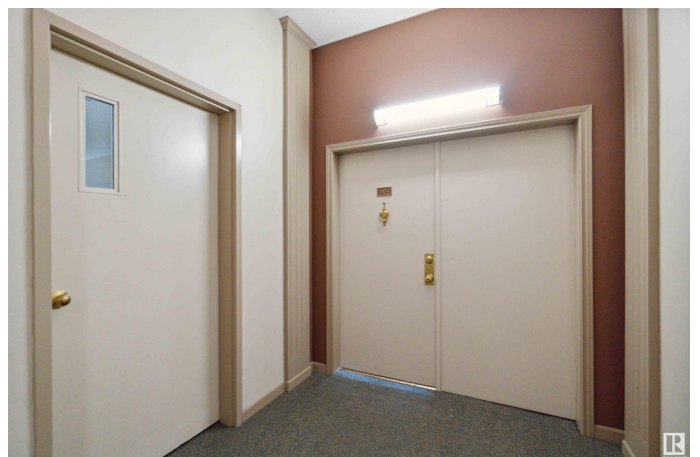
Beaumaris, Edmonton, AB

Looking for a quiet home, this 1 bedroom, top floor unit is located in an adult only complex and is the perfect blend of comfort and convenience. Featuring an open floor plan and vaulted ceilings, this bright and spacious unit boasts a large kitchen, dining area, and living room—ideal for entertaining and an expansive bedroom offers ample space. For your convenience there is in-suite laundry and a storage room. Step outside to one of the largest balconies in the complex and find stunning views of Beaumaris Lake! Additional perks include a secure indoor garage parking space and you will enjoy exclusive access to building amenities such as a pool, hot tub, gym, party room, and guest suite. Located just steps away from Beaumaris Lake, you'll also appreciate the easy access to shopping, public transportation, parks, and more

Built in 1992

Essential Information

MLS® #	E4425835
Price	\$200,000
Bedrooms	1
Bathrooms	1.00
Full Baths	1
Square Footage	958
Acres	0.00



Year Built	1992
Type	Condo / Townhouse
Sub-Type	Lowrise Apartment
Style	Single Level Apartment
Status	Active

Community Information

Address	409 15499 Castle Downs Road
Area	Edmonton
Subdivision	Beaumaris
City	Edmonton
County	ALBERTA
Province	AB
Postal Code	T5X 5W7

Amenities

Amenities	Deck, Detectors Smoke, Guest Suite, Hot Tub, Intercom, No Animal Home, No Smoking Home, Parking-Visitor, Party Room, Pool-Indoor
Parking Spaces	1
Parking	Single Garage Detached
Has Pool	Yes

Interior

Appliances	Dishwasher-Built-In, Dryer, Microwave Hood Fan, Refrigerator, Stove-Electric, Washer, Window Coverings
Heating	Hot Water, Natural Gas
# of Stories	4
Stories	1
Has Basement	Yes
Basement	None, No Basement

Exterior

Exterior	Wood, Stucco
Exterior Features	Flat Site, Landscaped, No Through Road, Picnic Area, Playground Nearby, Public Transportation, Schools, Shopping Nearby, Waterfront Property
Roof	Asphalt Shingles
Construction	Wood, Stucco
Foundation	Concrete Perimeter

Additional Information

Date Listed	March 13th, 2025
Days on Market	23
Zoning	Zone 27
Condo Fee	\$578

DATA IS DEEMED RELIABLE BUT IS NOT GUARANTEED ACCURATE BY THE REALTORS® ASSOCIATION OF EDMONTON. COPYRIGHT 2025 BY THE REALTORS® ASSOCIATION OF EDMONTON. ALL RIGHTS RESERVED. Trademarks are owned or controlled by the Canadian Real Estate Association (CREA) and identify real estate professionals who are members of CREA (REALTOR®, REALTORS®) and/or the quality of services they provide (MLS®, Multiple Listing Service®)

Listing information last updated on April 5th, 2025 at 8:02am MDT