

\$749,888 - 43 Brunswyck Crescent, Spruce Grove

MLS® #E4425999

\$749,888

5 Bedroom, 3.50 Bathroom, 2,508 sqft
Single Family on 0.00 Acres

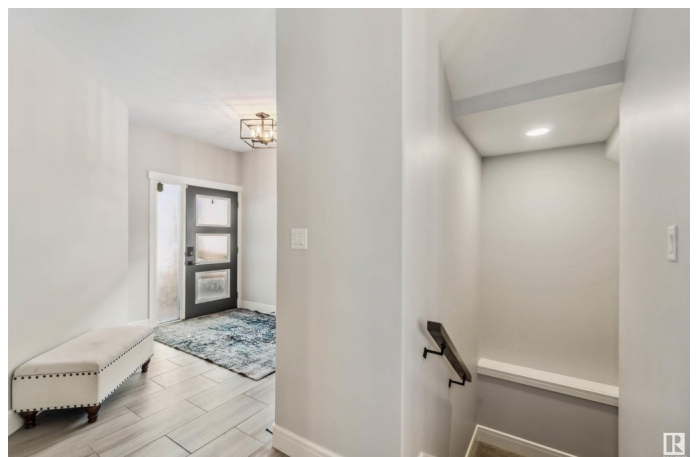
Fenwyck, Spruce Grove, AB

This beautiful custom built 2500 sqft +5 bed home was built by Encore master builders! This home is tucked away in Fenwyck and backing directly onto trees. When you enter you will notice the abundant natural light throughout the home. Some great kitchen features are a farm sink, a butlers pantry and a gas stove for the culinary enthusiast in the family. You have an inviting kitchen, dining area with a coffered ceiling and your living area has a cozy gas fireplace to enjoy on cold nights. You also have an oversized double tandem garage. With its contemporary open concept staircase that leads to the second floor. There you will find your spacious Primary bedroom retreat with a 5 piece bath and a fantastic walk in closet. 2 additional bedrooms and a bonus room along with a 4 piece bath complete this floor. Downstairs you have 2 more beds and a 4 piece bathroom and a spacious living area with a wetbar area as well. Enjoy your private backyard and spacious deck. This home has triple paned windows throughout.

Built in 2019

Essential Information

MLS® #	E4425999
Price	\$749,888



Bedrooms	5
Bathrooms	3.50
Full Baths	3
Half Baths	1
Square Footage	2,508
Acres	0.00
Year Built	2019
Type	Single Family
Sub-Type	Detached Single Family
Style	2 Storey
Status	Active

Community Information

Address	43 Brunswyck Crescent
Area	Spruce Grove
Subdivision	Fenwyck
City	Spruce Grove
County	ALBERTA
Province	AB
Postal Code	T7X 0Z1

Amenities

Amenities	Air Conditioner, Wet Bar, Workshop
Parking	Double Garage Attached

Interior

Interior Features	ensuite bathroom
Appliances	Air Conditioning-Central, Dishwasher-Built-In, Dryer, Garage Control, Garage Opener, Hood Fan, Oven-Microwave, Storage Shed, Stove-Gas, Washer, Window Coverings, Refrigerators-Two
Heating	Forced Air-1, Natural Gas
Stories	3
Has Basement	Yes
Basement	Full, Finished

Exterior

Exterior	Wood, Brick, Vinyl
Exterior Features	Backs Onto Park/Trees, Corner Lot, Fenced, Flat Site, Landscaped
Roof	Asphalt Shingles

Construction Wood, Brick, Vinyl
Foundation Concrete Perimeter

Additional Information

Date Listed March 16th, 2025
Days on Market 19
Zoning Zone 91

DATA IS DEEMED RELIABLE BUT IS NOT GUARANTEED ACCURATE BY THE REALTORS® ASSOCIATION OF EDMONTON. COPYRIGHT 2025 BY THE REALTORS® ASSOCIATION OF EDMONTON. ALL RIGHTS RESERVED. Trademarks are owned or controlled by the Canadian Real Estate Association (CREA) and identify real estate professionals who are members of CREA (REALTOR®, REALTORS®) and/or the quality of services they provide (MLS®, Multiple Listing Service®)

Listing information last updated on April 4th, 2025 at 8:17am MDT