

\$250,000 - 315 10235 112 Street, Edmonton

MLS® #E4427698

\$250,000

2 Bedroom, 2.00 Bathroom, 954 sqft
Condo / Townhouse on 0.00 Acres

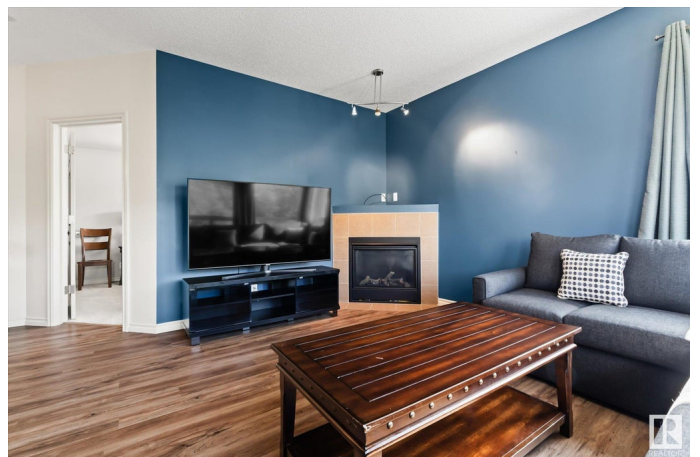
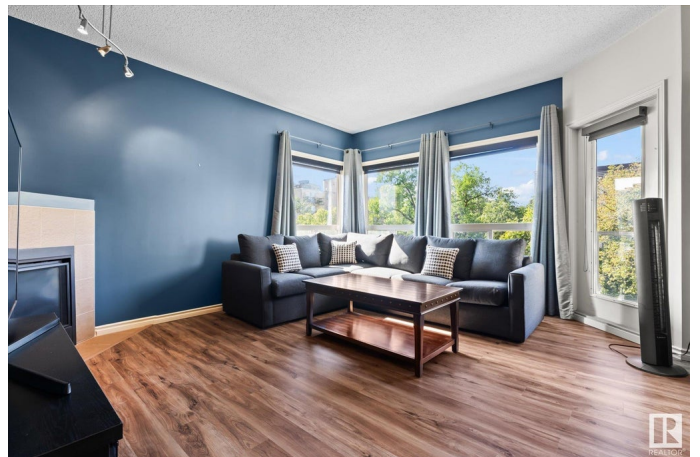
Wä@hkwãntãwin, Edmonton, AB

Welcome to Unit 315 in The Imperial, located downtown close to Oliver Square and MacEwan University. This third floor corner unit condo has been recently remodelled and shows great! With 2 large bedrooms and 2 remodelled bathrooms. The spacious kitchen has new cabinets and quartz counter tops. Open concept layout with lots of windows facing southwest letting in lots of natural light. The main living space has new vinyl plank flooring. The primary bedroom has 2 walk through closets and a 4p ensuite. Also complete with in-suite laundry and storage. This unit has a large balcony with city views and titled underground heated parking. Walking distance to many local shops and coffee houses.

Built in 2007

Essential Information

MLS® #	E4427698
Price	\$250,000
Bedrooms	2
Bathrooms	2.00
Full Baths	2
Square Footage	954
Acres	0.00
Year Built	2007



Type	Condo / Townhouse
Sub-Type	Apartment High Rise
Style	Single Level Apartment
Status	Active

Community Information

Address	315 10235 112 Street
Area	Edmonton
Subdivision	W&hkw&ant&win
City	Edmonton
County	ALBERTA
Province	AB
Postal Code	T5K 1M7

Amenities

Amenities	Secured Parking, Storage-In-Suite
Parking	Heated, Underground

Interior

Interior Features	ensuite bathroom
Appliances	Microwave Hood Fan, Refrigerator, Stacked Washer/Dryer, Stove-Electric, Window Coverings, See Remarks
Heating	In Floor Heat System, Natural Gas
Fireplace	Yes
Fireplaces	Corner
# of Stories	6
Stories	1
Has Basement	Yes
Basement	None, No Basement

Exterior

Exterior	Concrete, Stucco
Exterior Features	Flat Site, Landscaped, Playground Nearby, Public Transportation, Schools, Shopping Nearby, View City, View Downtown
Roof	Tar & Gravel
Construction	Concrete, Stucco
Foundation	Concrete Perimeter

Additional Information

Date Listed March 27th, 2025

Days on Market 7

Zoning Zone 12

Condo Fee \$638

DATA IS DEEMED RELIABLE BUT IS NOT GUARANTEED ACCURATE BY THE REALTORS® ASSOCIATION OF EDMONTON. COPYRIGHT 2025 BY THE REALTORS® ASSOCIATION OF EDMONTON. ALL RIGHTS RESERVED. Trademarks are owned or controlled by the Canadian Real Estate Association (CREA) and identify real estate professionals who are members of CREA (REALTOR®, REALTORS®) and/or the quality of services they provide (MLS®, Multiple Listing Service®)

Listing information last updated on April 3rd, 2025 at 3:47pm MDT