

Courtesy Of Janeen Tinker Of Real Broker

\$357,000 - 1232 105 Street, Edmonton

MLS® #E4427790

\$357,000

3 Bedroom, 3.00 Bathroom, 1,212 sqft
Condo / Townhouse on 0.00 Acres

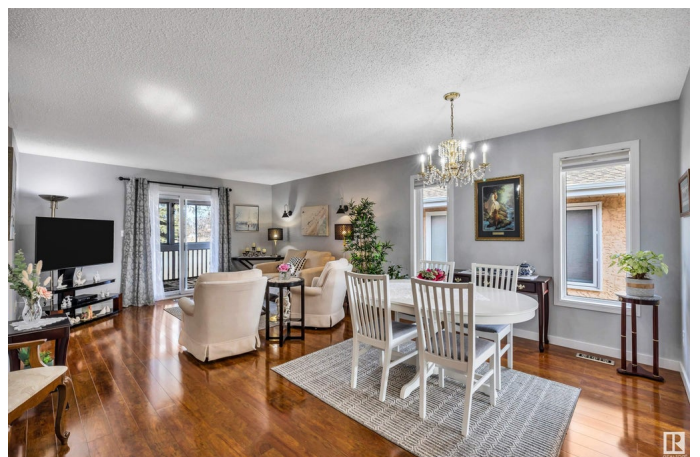
Bearspaw (Edmonton), Edmonton, AB

Welcome to this beautiful adult bungalow in sought-after Bearspaw's 45+ community of Brookside Estates - a perfect blend of comfort, accessibility & privacy. This meticulously maintained half duplex features a timeless white kitchen w/newer stainless steel appliances, 2 spacious upper bedrooms including the primary suite w/3-piece ensuite, plus another full 4 piece bathroom. The extra-wide hallway ensures easy mobility. Other notables include: newer flooring, paint, furnace & more! All this, plus a finished basement, DOUBLE car garage, AC & a screened-in sun-room backing onto a serene open field—a private retreat for peaceful mornings & quiet evenings. The community clubhouse is perfect for socializing & staying active with a pool table, full kitchen & plenty of space for hosting events. Experience the best of adult living in this quiet, private & welcoming community - within walking distance of all amenities, tennis courts, YMCA, community garden, walking trails, Bearspaw Lake, etc.

Built in 1987

Essential Information

MLS® #	E4427790
Price	\$357,000
Bedrooms	3



Bathrooms	3.00
Full Baths	3
Square Footage	1,212
Acres	0.00
Year Built	1987
Type	Condo / Townhouse
Sub-Type	Half Duplex
Style	Bungalow
Status	Active

Community Information

Address	1232 105 Street
Area	Edmonton
Subdivision	Bearspaw (Edmonton)
City	Edmonton
County	ALBERTA
Province	AB
Postal Code	T6J 6J9

Amenities

Amenities	Air Conditioner, Sunroom, See Remarks
Parking	Double Garage Attached

Interior

Interior Features	ensuite bathroom
Appliances	Air Conditioning-Central, Dishwasher-Built-In, Dryer, Microwave Hood Fan, Refrigerator, Stove-Electric, Washer, Window Coverings
Heating	Forced Air-1, Natural Gas
Stories	2
Has Basement	Yes
Basement	Full, Finished

Exterior

Exterior	Wood, Stucco
Exterior Features	Airport Nearby, Golf Nearby, Playground Nearby, Shopping Nearby, See Remarks
Roof	Asphalt Shingles
Construction	Wood, Stucco
Foundation	Concrete Perimeter

Additional Information

Date Listed March 27th, 2025

Days on Market 8

Zoning Zone 16

Condo Fee \$533

DATA IS DEEMED RELIABLE BUT IS NOT GUARANTEED ACCURATE BY THE REALTORS® ASSOCIATION OF EDMONTON. COPYRIGHT 2025 BY THE REALTORS® ASSOCIATION OF EDMONTON. ALL RIGHTS RESERVED. Trademarks are owned or controlled by the Canadian Real Estate Association (CREA) and identify real estate professionals who are members of CREA (REALTOR®, REALTORS®) and/or the quality of services they provide (MLS®, Multiple Listing Service®)

Listing information last updated on April 4th, 2025 at 10:47am MDT