

Courtesy Of Aleks S Radojic Of RE/MAX River City

## \$519,900 - 24 11 Dalton Link, Spruce Grove

MLS® #E4427912

**\$519,900**

1 Bedroom, 1.50 Bathroom, 1,214 sqft  
Condo / Townhouse on 0.00 Acres

Deer Park\_SPGR, Spruce Grove, AB

Build your brand New Executive Style Home in New Adult Community! This new home will be beautifully finished with all the upgrades you will need. Open concept floor plan with generous size living room with electric fireplace and Mantel, spacious Primary bedroom with room for a King size bed, with walk-in closet and laundry, 4 pc ensuite. The lower level is designed for an additional bedroom, full bath and large family/rec room. Plenty of parking with double attached garage, floor drain and long driveway with pot lights around. Quartz counter tops, Luxury vinyl plank flooring, Triple Pane Windows, and many more upgrades. Conveniently located just off Jennifer Heil road, with quick access to Highway 16.

Built in 2025

### Essential Information

MLS® #	E4427912
Price	\$519,900
Bedrooms	1
Bathrooms	1.50
Full Baths	1
Half Baths	1
Square Footage	1,214
Acres	0.00



Year Built	2025
Type	Condo / Townhouse
Sub-Type	Half Duplex
Style	Bungalow
Status	Active

### **Community Information**

Address	24 11 Dalton Link
Area	Spruce Grove
Subdivision	Deer Park_SPGR
City	Spruce Grove
County	ALBERTA
Province	AB
Postal Code	T7X 2X8

### **Amenities**

Amenities	Ceiling 9 ft., Deck, Exterior Walls- 2"x6", Front Porch, Hot Wtr Tank-Energy Star, Low Flw/Dual Flush Toilet, Vinyl Windows, HRV System, Natural Gas BBQ Hookup, 9 ft. Basement Ceiling
Parking	Double Garage Attached

### **Interior**

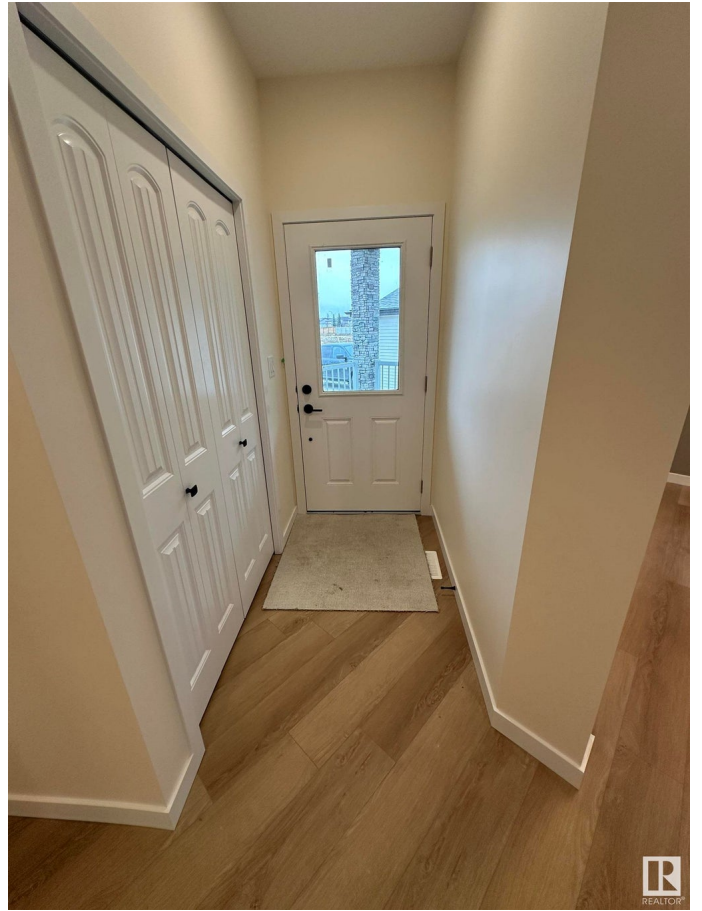
Interior Features	ensuite bathroom
Appliances	Dishwasher-Built-In, Dryer, Garage Opener, Microwave Hood Fan, Refrigerator, Stove-Electric, Washer
Heating	Forced Air-1, Natural Gas
Fireplace	Yes
Fireplaces	Insert
Stories	1
Has Basement	Yes
Basement	Full, Unfinished

### **Exterior**

Exterior	Wood, Stone, Vinyl
Exterior Features	Gated Community, Landscaped, No Back Lane, Shopping Nearby
Roof	Asphalt Shingles
Construction	Wood, Stone, Vinyl
Foundation	Concrete Perimeter

### **Additional Information**

Date Listed March 28th, 2025  
Days on Market 6  
Zoning Zone 91  
Condo Fee \$193



DATA IS DEEMED RELIABLE BUT IS NOT GUARANTEED ACCURATE BY THE REALTORS® ASSOCIATION OF EDMONTON. COPYRIGHT 2025 BY THE REALTORS® ASSOCIATION OF EDMONTON. ALL RIGHTS RESERVED. Trademarks are owned or controlled by the Canadian Real Estate Association (CREA) and identify real estate professionals who are members of CREA (REALTOR®, REALTORS®) and/or the quality of services they provide (MLS®, Multiple Listing Service®)

Listing information last updated on April 3rd, 2025 at 1:32pm MDT