

Courtesy Of John Rota Of Sweetly

## \$625,000 - 216 Crystal Creek Drive, Leduc

MLS® #E4428840

**\$625,000**

3 Bedroom, 3.00 Bathroom, 2,090 sqft

Single Family on 0.00 Acres

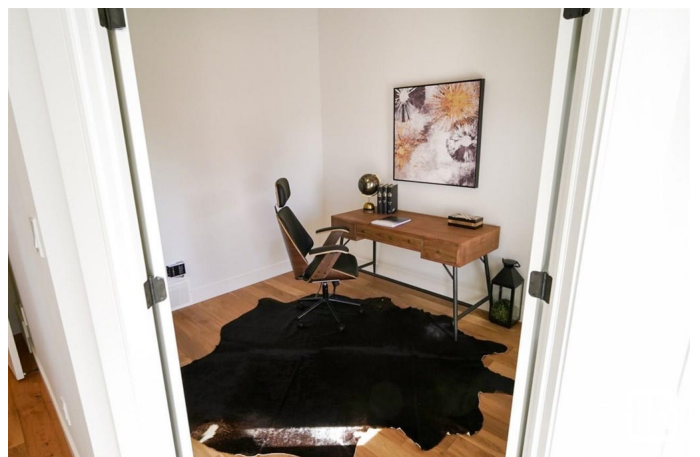
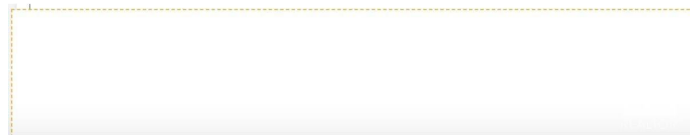
Crystal Creek\_LEDU, Leduc, AB

Welcome to this stunning two-storey home in Leduc! The main floor offers a bright and open layout with a cozy living room featuring a fireplace, a dining area, a stylish kitchen with a pantry, a 4-piece bathroom, a den, and a mudroom for added convenience. Upstairs, you'll find a spacious bonus room, two bedrooms, a 4-piece bathroom, a laundry room and a luxurious primary suite with a walk-in closet and a 5-piece ensuite. Completing the home is an attached double garage, making it the perfect blend of style and functionality. Photos are of a completed show home and are for representation only. Selections can be customized

Built in 2025

### Essential Information

MLS® #	E4428840
Price	\$625,000
Bedrooms	3
Bathrooms	3.00
Full Baths	3
Square Footage	2,090
Acres	0.00
Year Built	2025
Type	Single Family
Sub-Type	Detached Single Family



Style 2 Storey  
Status Active

### Community Information

Address 216 Crystal Creek Drive  
Area Leduc  
Subdivision Crystal Creek\_LEDU  
City Leduc  
County ALBERTA  
Province AB  
Postal Code T9E 1N3

### Amenities

Amenities Detectors Smoke, No Animal Home, No Smoking Home  
Parking Double Garage Attached

### Interior

Interior Features ensuite bathroom  
Appliances See Remarks  
Heating Forced Air-1, Natural Gas  
Stories 2  
Has Basement Yes  
Basement Full, Unfinished

### Exterior

Exterior Wood, Vinyl  
Exterior Features Playground Nearby, Public Transportation, Schools, Shopping Nearby  
Roof Asphalt Shingles  
Construction Wood, Vinyl  
Foundation Concrete Perimeter

### Additional Information

Date Listed April 3rd, 2025  
Days on Market 8  
Zoning Zone 81

DATA IS DEEMED RELIABLE BUT IS NOT GUARANTEED ACCURATE BY THE REALTORS® ASSOCIATION OF EDMONTON. COPYRIGHT 2025 BY THE REALTORS® ASSOCIATION OF EDMONTON. ALL RIGHTS RESERVED. Trademarks are owned or controlled by the Canadian Real Estate Association (CREA) and identify real estate professionals who are members of CREA (REALTOR®, REALTORS®) and/or the quality of services they provide (MLS®, Multiple Listing Service®)

Listing information last updated on April 11th, 2025 at 12:02am MDT